



**SCOTTISHPOWER
RENEWABLES**

East Anglia ONE North and East Anglia TWO Offshore Windfarms

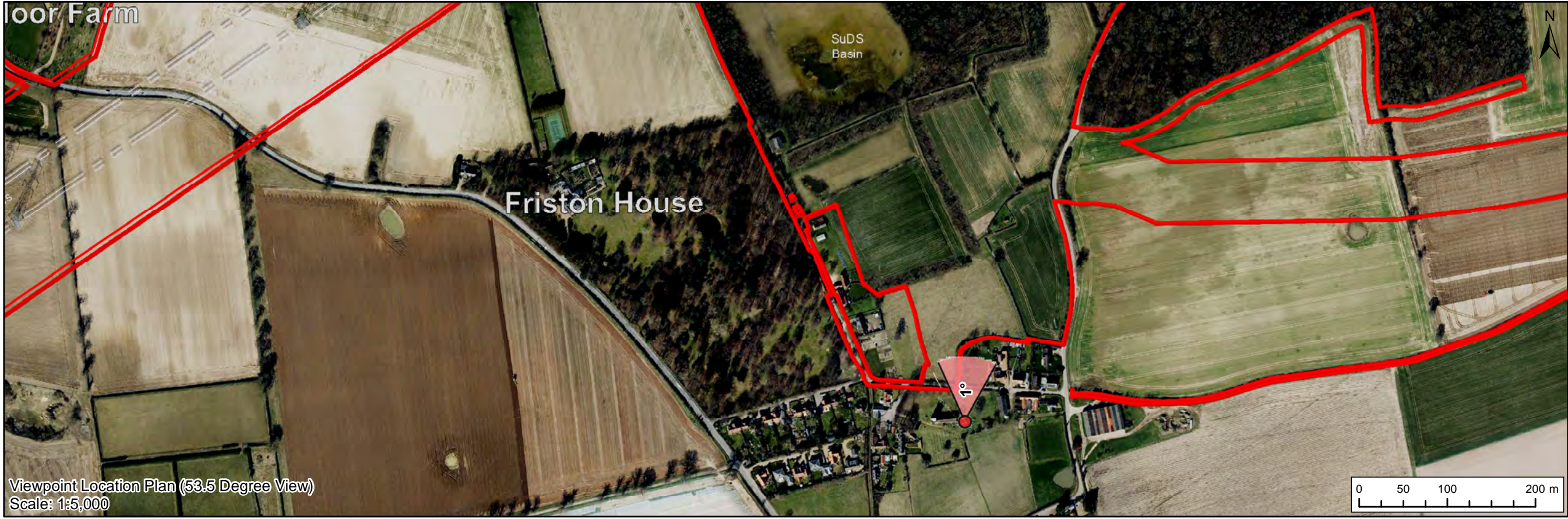
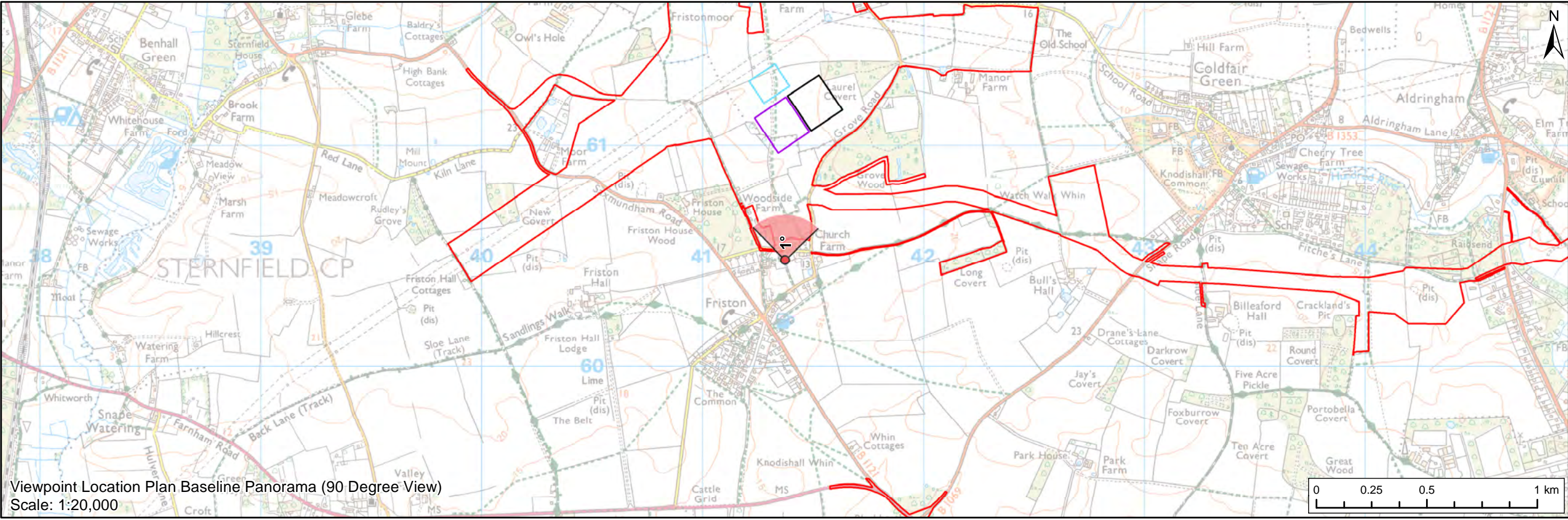
Heritage Assessment GIS Addendum

**Appendix 6 CHVP8 – Friston War
Memorial (Appendix 24.7, Figure 13
Update)**

Applicants: East Anglia ONE North Limited and East Anglia TWO Limited
Document Reference: ExA.AS-30.D11.V1_06
SPR Reference: EA1N_EA2-DWF-ENV-REP-IBR-001074_06

Date: 7th June 2021
Revision: Version 1
Author: Royal HaskoningDHV

Applicable to East Anglia ONE North and East Anglia TWO



Legend

- East Anglia ONE North and East Anglia TWO Onshore Development Area
- Western Substation (190m x 170m)
- Eastern Substation (190m x 170m)
- Indicative National Grid GIS Substation Location

Viewpoint:

- 90 Degree Field of View Viewpoint
- 63.5 Degree Field of View Viewpoint



							East Anglia ONE North and East Anglia TWO CHVP8: Friston War Memorial	(Figure 13 - GIS Update)			
	2	07/06/2021	TH	Second Issue (OPEN)	Prepared:	TH		Scale @ A3	Rev	D11	Coordinate System: BNG Datum: OSGB36
	1	13/01/2021	LA	First Issue (OPEN)	Checked:	SM		<small>Source: © Crown copyright and database rights 2020, Ordnance Survey 0100201673. This map has been produced to the latest known information at the time of issue, and has been produced for your information only. Please consult with the SPN Onshore GIS team to ensure the content is still current before using the information contained on this map. No liability is accepted for any errors or omissions in the map and shall not be liable for any loss, damage or expense caused by such errors or omissions.</small>	Date	07/06/21	
	Rev	Date	By	Comment	Approved:	LT			Figure	13a	



Baseline Photograph (53.5 Degree Field of View)

View flat at a comfortable arm's length



Visual representation of 1st year of operational phase
Photomontage of the proposed western substation and National Grid GIS substation

View flat at a comfortable arm's length



Visual representation of 15th year of operational phase
Photomontage of the proposed western substation and National Grid GIS substation

View flat at a comfortable arm's length

OS reference:	641372 E 260485 N	Horizontal field of view:	53.5° (planar projection)	Camera:	Canon EOS 5D Mark II
Eye level:	16 m AOD	Principal viewing distance:	812.5 mm	Lens:	50mm (Canon EF 50mm f/1.4)
Direction of view:	1°	Paper size:	841 x 297 mm (half A1)	Camera height:	1.5 m AGL
		Correct printed image size:	820 x 260 mm	Date and time:	21/02/2019, 10:03:56

Contains Ordnance Survey digital data © Crown copyright, All rights reserved 2019 Licence number 0100031673

Figure: 13d
CHVP8: Friston War Memorial



Visual representation of 1st year of operational phase
Photomontage of the proposed eastern substation and National Grid GIS substation

View flat at a comfortable arm's length



Visual representation of 15th year of operational phase
Photomontage of the proposed eastern substation and National Grid GIS substation

View flat at a comfortable arm's length



Visual representation of 1st year of operational phase
Photomontage of the proposed western substation, eastern substation and National Grid GIS substation

View flat at a comfortable arm's length



Visual representation of 15th year of operational phase
Photomontage of the proposed western substation, eastern substation and National Grid GIS substation

View flat at a comfortable arm's length